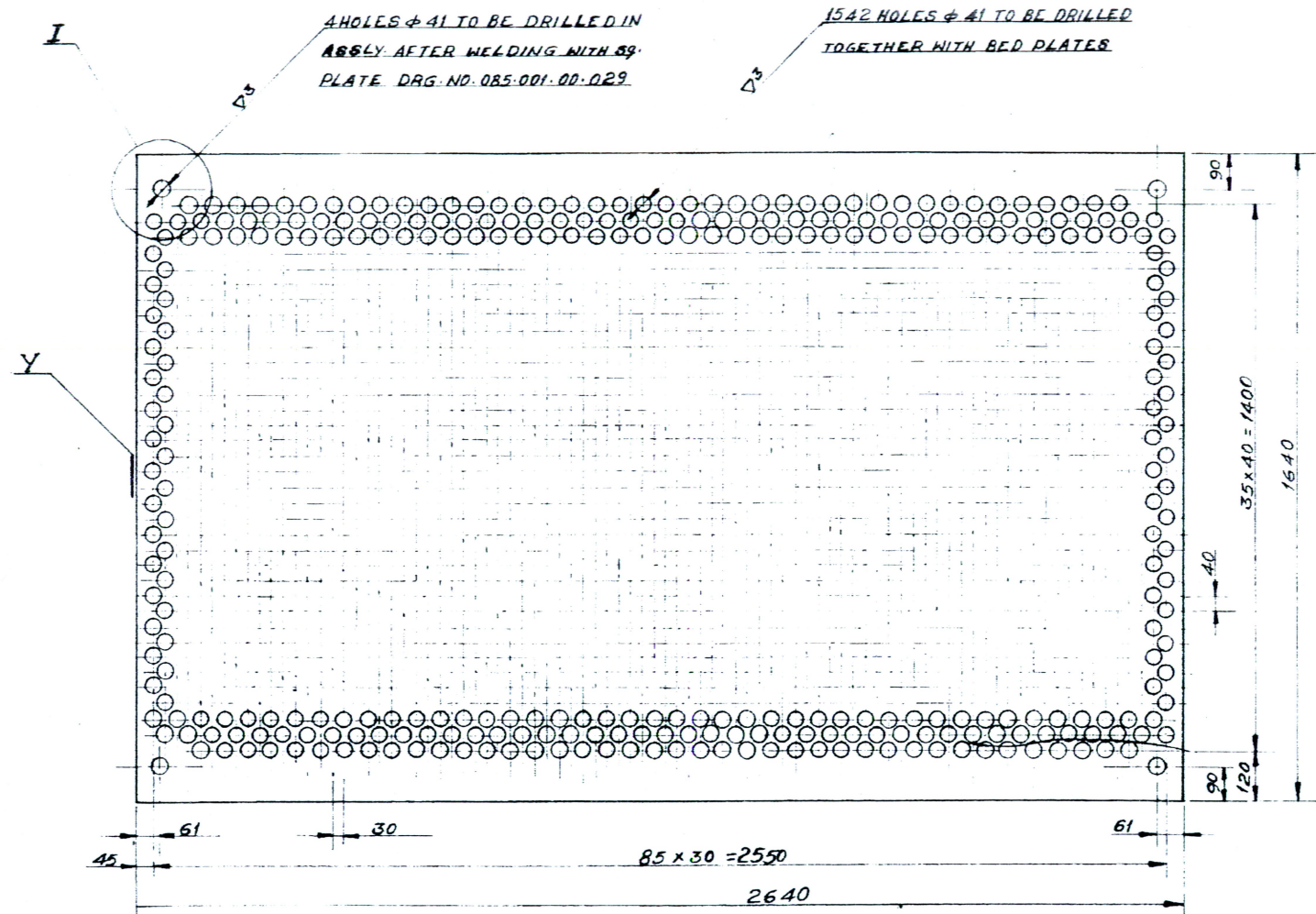
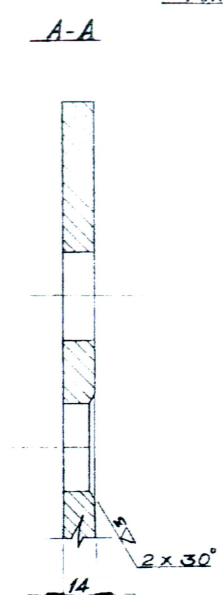
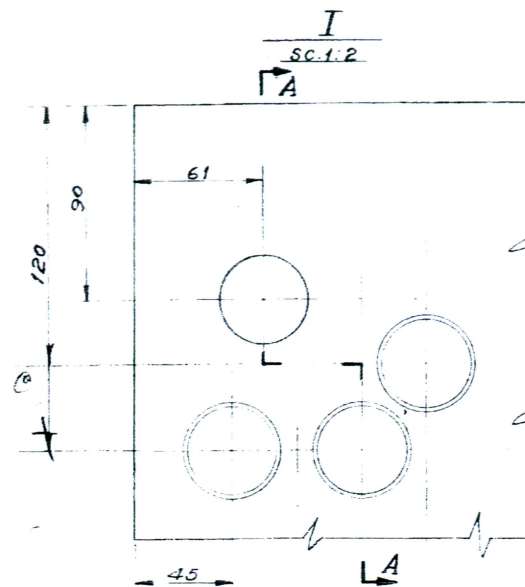


085-001.00.034



4 HOLES $\phi 41$ TO BE DRILLED IN ASSEMBLY AFTER WELDING WITH BRASS PLATE DRG. NO. 085-001-00-029

1542 HOLES $\phi 41$ TO BE DRILLED TOGETHER WITH BED PLATES



NOTES:-

1. WHILE DRILLING THE HOLE NOS. 1542 $\phi 41$ FACE 'Y' TO BE IN SAME VERTICAL PLANE AS FACE 'Y' OF BED PLATE LOWER.
2. THIS DRG. HAS BEEN MADE AFTER TAKING THE MEASUREMENT OF THE PART AND BASED ON USER DRG. NO. K-352190, BSL-ARCH. NO. UT-E/89695 (PLD DRG. NO. 085-001-00-023).

POS	DESCRIPTION	QTY	UNIT	MATERIAL	G.A. DRG.	SC.	DRG. NO.
1	BED PLATE TOP 2640x1640x14	1	25535	St-42W IS:2062-69	085-001-00-026	1:10	085-001-00-034

		BOKARO STEEL LIMITED					
SHOP		T. P. P. & T. B. S.					
UNIT		BOILER (085/001)					
DESCRIPTION OF DRAWING		DETAIL OF AIR HEATER SECTION EXTREME AND INTERMEDIATE OF BOILER T1-155, D=220 T/H P=100KG/Sq. CM. t=540°C					
REVISIONS	DRAWN	S. PRASAD		DATE	MAY-75		
	CHECKED	B. RAM		SCALE	1:10, 1:2		
	TRACED						
	SUBMITTED	J. C. SINHA			085-001-00-034		
	APPROVED						

0.5H1