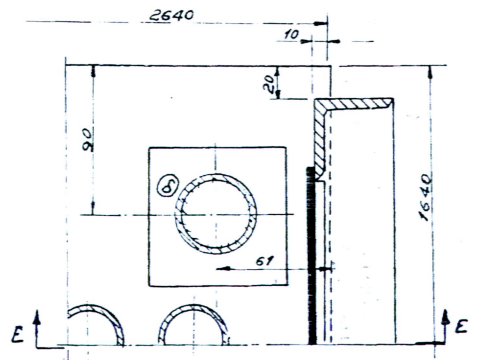
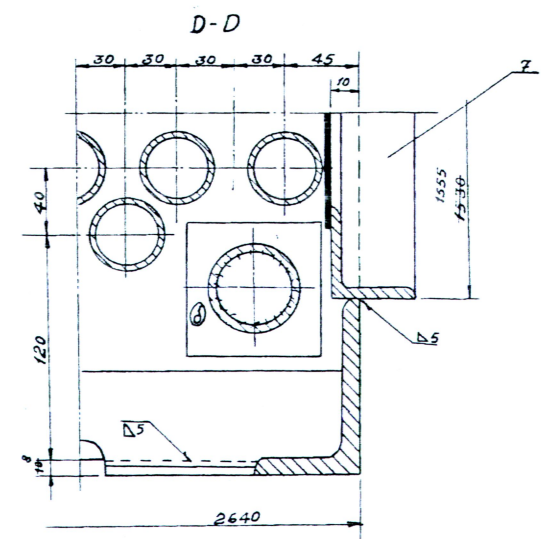
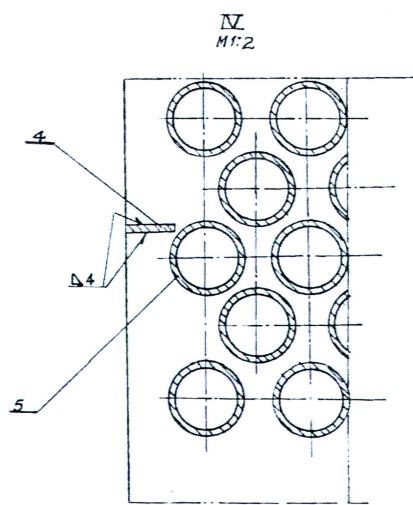
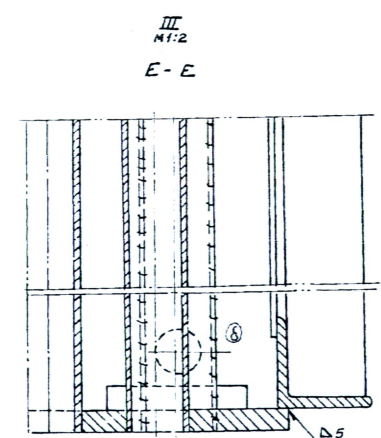
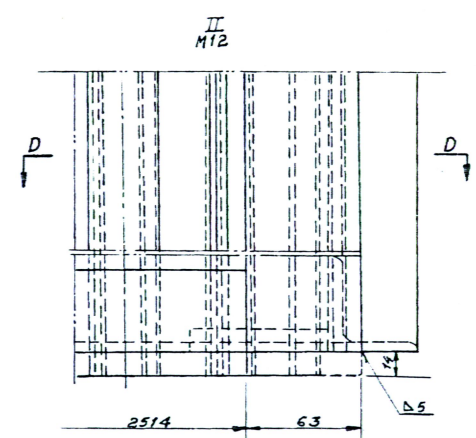
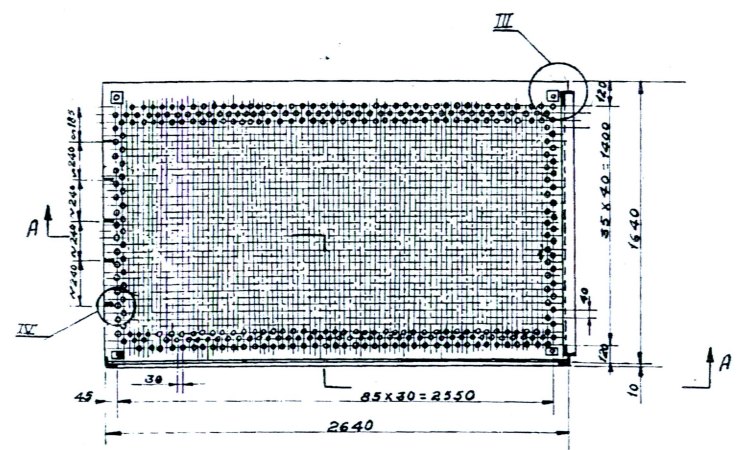
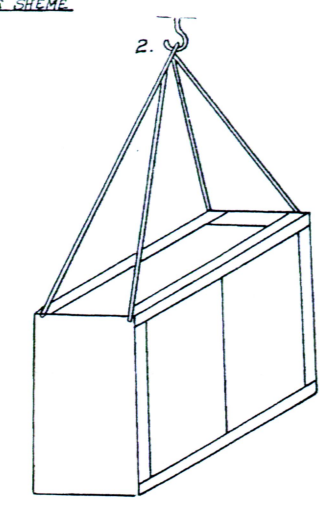


SECTION LIFTING SCHEME



NOTES:-

1. SECTION TO BE MADE AFTER TY-36-59 AND APP.1
2. ATTACHMENT THE TUBES TO THE TOP AND LOWER TUBE BED PLATE TO BE DONE BY ELECTRO-WELDING WITH DENSE CONTINUOUS WELDED
3. HEATING SURFACE OF THE SECTION H=680M<sup>2</sup>
4. THE TUBES POS. NO.-5 MAY BE MADE FROM ERW PIPES ALSO.

⊗ TUBE MATERIAL: BS 6323-5-ERW-4-1982  
 31/1/19

PLD. DRG. NO.	USSR DRG. NO.	POS.	DESCRIPTION	QTY.	UNIT	TOTAL WT. IN KG.	MATERIAL	REMARKS
085-001-00-024	K-352138	7	SECTION SIDE SHIELD	1	237	237	ASSLY	
085-001-00-033	K-352139	6	FRAME	1	95.4	95.4	ASSLY	
085-001-00-031	K-352143	5	TUBES φ40x2, l=3700	1542	6.9	10650	CM-20 GOST-1094-53 F6 410WB GOST 500-58	15:1914 15:1914-82 15:2062-92
085-001-00-026	K-255233	3	BED PLATE TOP	1	258	258	ASSLY	
085-001-00-027	K-255231	2	BED PLATE MIDDLE	1	94	94	BCM 3RN	F6 410WB
085-001-00-025	K-255234	1	BED PLATE LOWER	1	258	258	ASSLY	

POS.	DESCRIPTION	QTY.	UNIT	MATERIAL	G.A. DRG.	SC.	DRG. NO.
1	AIR HEATER SECTION EXTREME	12	1/1620	ASSLY	K-353224	1:20	085-001-00-023A

BOKARO STEEL LIMITED	
SHOP	T. P. P. E. T. B. S.
UNIT	BOILER TYPE - TII-155, D=220 <sup>2</sup> /h (085/001)
DESCRIPTION OF DRAWING	BOILER TII-155, D=220 <sup>2</sup> /h, P=100K <sup>2</sup> /sqcm, t=540 <sup>2</sup> °C DETAILS OF AIR HEATER (ARCH. NO. UT-E/89596)

ORIGINAL DOCUMENTS  
 SUPPLIER'S NAME USSR K-352138  
 BY DRG. NO. UT-E/89596  
 B.S.L. ARCH. NO. UT-E/89596

REVISIONS	DRAWN	CHECKED	TRACED	DATE
1	B. RAM	B. RAM	S. PRASAD	MAY-75
2				
3				

⊗ CORRECTIONS 5"(3)KUT57

085-001-00-023A  
 APPROVED