

4- $\phi 41$ TO BE DRILLED IN ASSEMBLY
AFTER WELDING WITH
SQUARE PLATE DRG NO. 085,001,00,029

V3 ALL OVER

SECTION A-A
SCALE 1:1

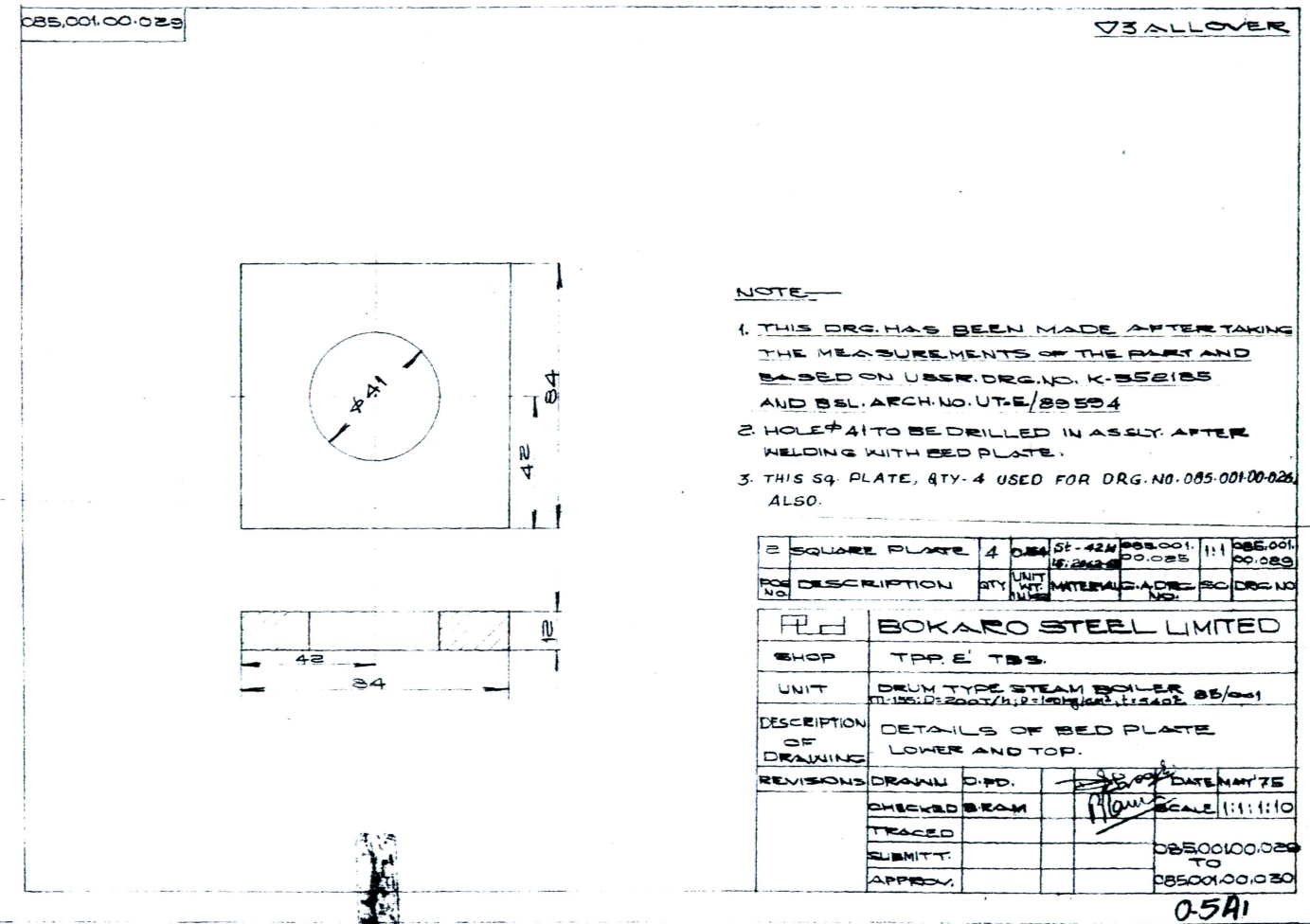
1542- $\phi 41$ TO BE DRILLED
TOGETHER WITH BED PLATE
MIDDLE DRG NO. 085,001,00,032

35x30 = 2550
3640

NOTE:
WHILE DRILLING THE HOLES NOS. 1542- $\phi 41$ FACE
"Y" TO BE IN SAME VERTICAL PLANE AS
FACE "Y" OF BED PLATE MIDDLE AND TOP.

THIS DRG. HAS BEEN MADE AFTER TAKING
THE MEASUREMENTS OF THE PART AND BASED
ON USSR. DRG. NO. K-352189 AND BSL. ARCH.
NO. UT-E/80534

POS NO	DESCRIPTION	QTY	UNIT	MATERIAL	DRG NO	SC	DRG NO
1	BED PLATE LOWER	1	PCS	ST-42N	085,001,00,030	1:1	085,001,00,030
					085,001,00,025		



085,001,00,029

V3 ALL OVER

NOTE

1. THIS DRG. HAS BEEN MADE AFTER TAKING THE MEASUREMENTS OF THE PART AND BASED ON USSR. DRG. NO. K-352189 AND BSL. ARCH. NO. UT-E/80534
2. HOLE $\phi 41$ TO BE DRILLED IN ASSLY. AFTER WELDING WITH BED PLATE.
3. THIS SQ. PLATE, QTY-4 USED FOR DRG. NO. 085,001,00,029 ALSO.

POS NO	DESCRIPTION	QTY	UNIT	MATERIAL	DRG NO	SC	DRG NO
2	SQUARE PLATE	4	PCS	ST-42N	085,001,00,029	1:1	085,001,00,029

BOKARO STEEL LIMITED

SHOP: TPP. E. TBS.

UNIT: DRUM TYPE STEAM BOILER
M: 125; D: 2007/4; P: 100 kg/cm²; S: 2402 85/001

DESCRIPTION OF DRAWING: DETAILS OF BED PLATE LOWER AND TOP.

REVISIONS: DRAWN: D.P.D. DATE: MAY 75
CHECKED: BRAM SCALE: 1:1:1:10
TRACED: [Signature]
SUBMITT: 085,001,00,029
APPROV: 085,001,00,030

0-5A1

1771h