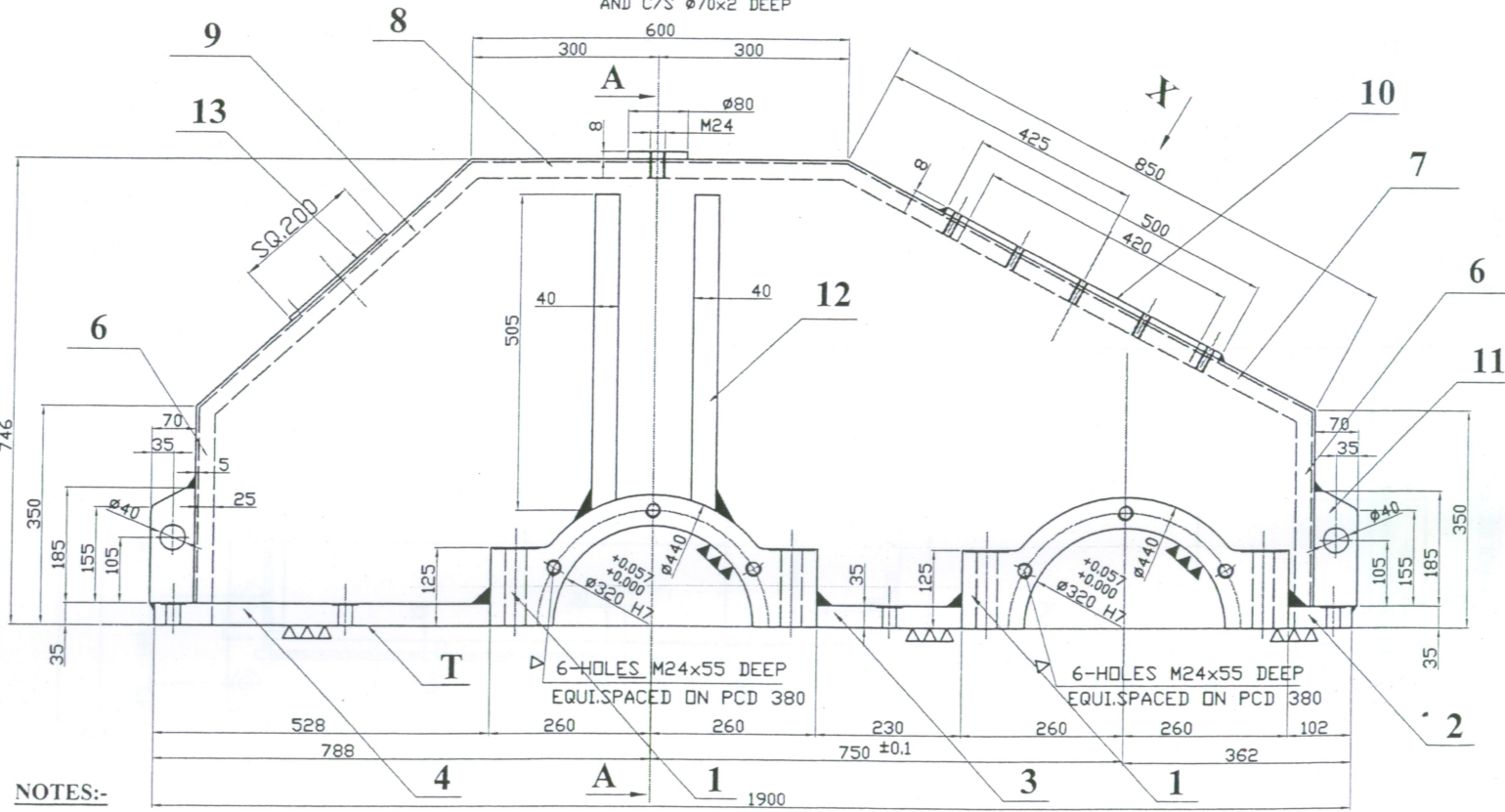
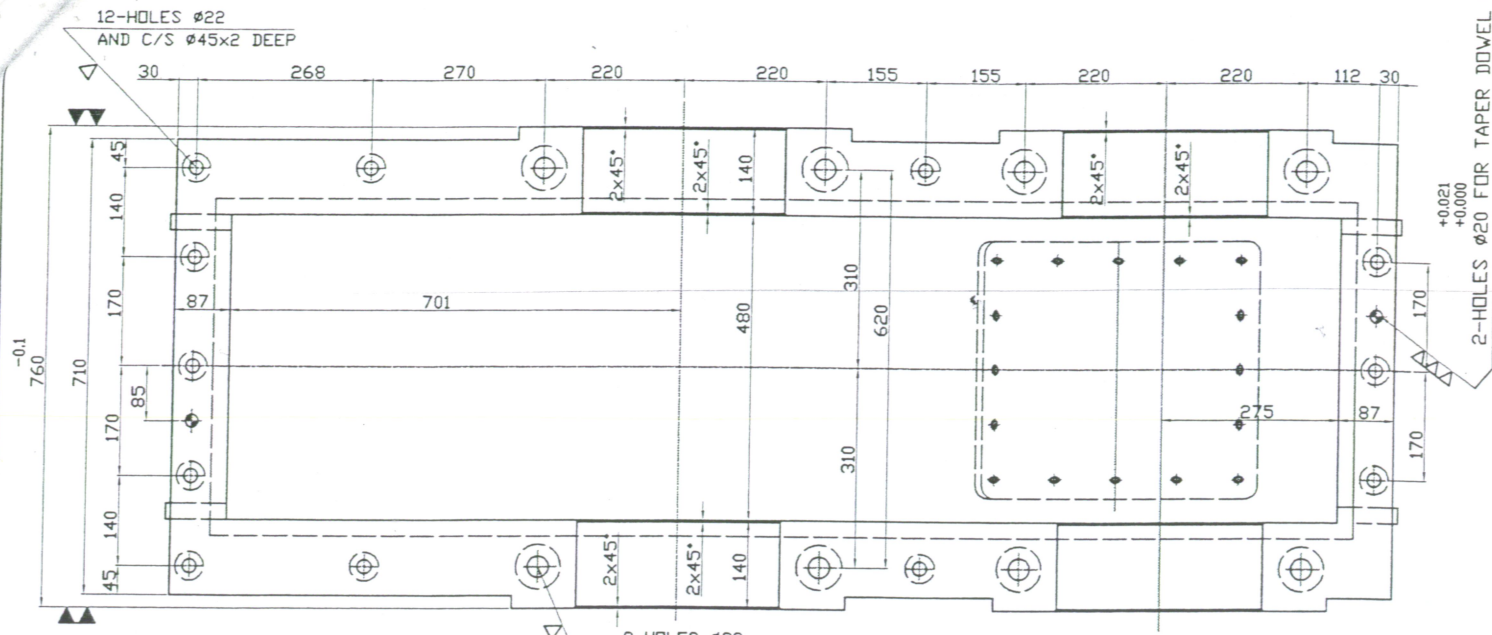


RANGE	OVER	0.5	3	6	30	120	315	1000
TD		3	6	30	120	315	1000	2000
TOLERANCE		± 0.05	± 0.1	± 0.2	± 0.3	± 0.5	± 0.8	± 1.2

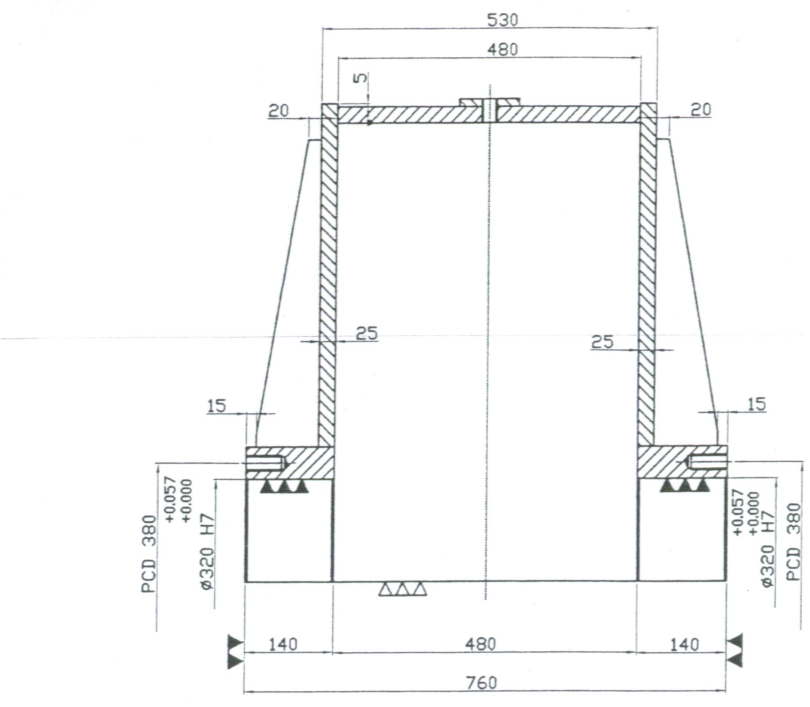


- NOTES:-**
- REDUCER COVER IS TO BE STRESS RELIEVED BEFORE MACHINING
  - WELDMENT SHOULD BE LEAK PROOF.
  - REDUCER COVER IS TO BE MACHINED TOGETHER WITH REDUCER BODY DRG.No. 0-01-1-0714
  - INDICATES THE MACHINING TO BE DONE IN ASSLY. WITH BODY DRG.No. 0-01-1-0714
  - WELD SIZE Δ6 UNLESS OTHERWISE SPECIFIED.
  - DISPLACEMENT OF THE AXES OF BORES  $\phi 320$  H7, AND  $\phi 320$  H7 FROM THE SURFACE 'T' TO BE NOT MORE THAN 0.5 mm.  

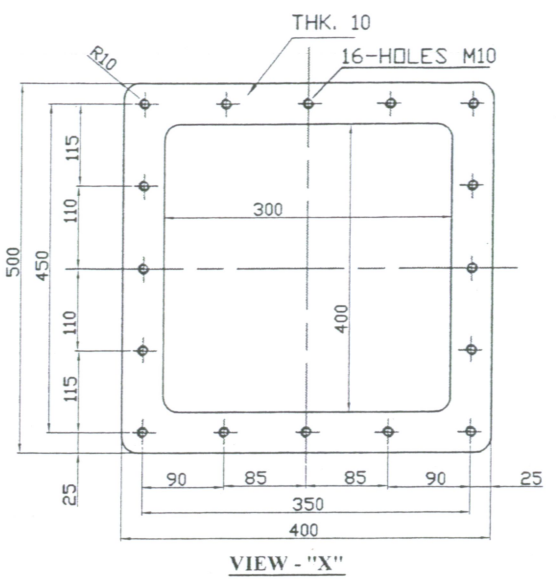
+0.057	+0.057
+0.000	+0.000
  - NON PARALLELISM AND TWIST OF THE AXES OF BORES  $\phi 320$  H7 AND  $\phi 320$  H7 w.r.t EACH OTHER SHOULD NOT BE MORE THAN 0.10 mm OVER A WIDTH OF 750 mm.  

+0.057	+0.057
+0.000	+0.000
  - NON PERPENDICULARITY OF THE SURFACES 'U' RELATIVE TO THE AXES OF BORES TO BE NOT MORE THAN 0.04 mm.  

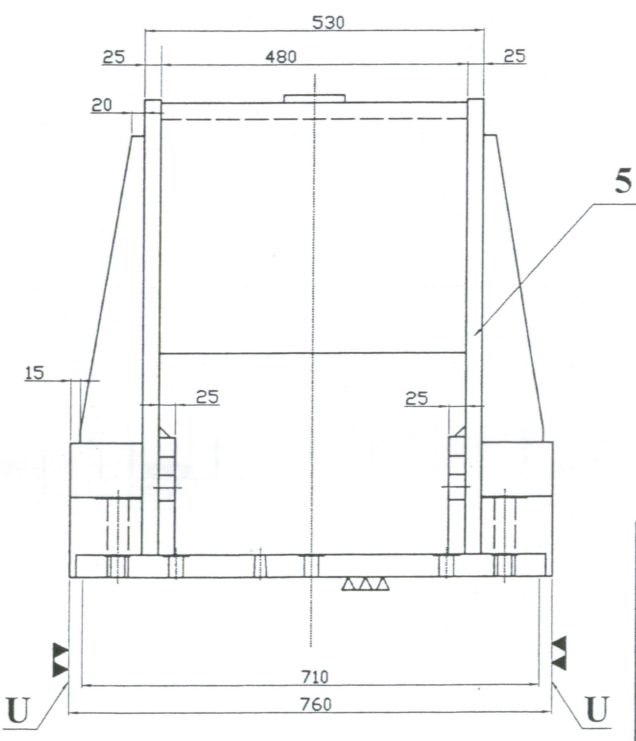
+0.057	+0.057
+0.000	+0.000
  - OVALITY AND TAPER OF FITTING DIAMETERS  $\phi 320$  H7 AND  $\phi 320$  H7 SHOULD BE WITHIN HALF OF THE RESPECTIVE DIAMETRICAL TOLERANCES.
  - REDUCER COVER WHEN ASSEMBLED TOGETHER WITH THE REDUCER BODY DRG.No. 0- A FEELER GAUGE OF THICKNESS 0.05 mm SHOULD NOT PASS THROUGH THE JOINT SURFACE
  - INSIDE SURFACE OF THE REDUCER BODY IS TO BE PAINTED WITH TWO COATS OF OIL RESISTING PAINT.
  - REMOVE ALL SHARP EDGES.



SECTION - "A-A"



VIEW - "X"



QTY.	DESCRIPTION	MATERIAL	UNIT WT.IN Kg	DRG.No.	PDS. NO.
1	PLATE SQ.200x6	Fe410WB IS:2062-92	0.4	SUIT TO ASSLY.	13
4	PLATE 40x98x505	Fe410WB IS:2062-92	15.47	SUIT TO ASSLY.	12
4	PLATE 25x70x185	Fe410WB IS:2062-92	2.54	SUIT TO ASSLY.	11
1	PLATE 13x400x500	Fe410WB IS:2062-92	20.41	SUIT TO ASSLY.	10
1	PLATE 25x480x580	Fe410WB IS:2062-92	54.05	SUIT TO ASSLY.	9
1	PLATE 25x480x600	Fe410WB IS:2062-92	55.91	SUIT TO ASSLY.	8
1	PLATE 25x480x850	Fe410WB IS:2062-92	79.2	SUIT TO ASSLY.	7
2	PLATE 25x315x480	Fe410WB IS:2062-92	29.35	SUIT TO ASSLY.	6
2	PLATE 25x711x1776	Fe410WB IS:2062-92	247.7	SUIT TO ASSLY.	5
1	PLATE 35x528x710	Fe410WB IS:2062-92	102.9	SUIT TO ASSLY.	4
2	PLATE 35x230x710	Fe410WB IS:2062-92	44.8	SUIT TO ASSLY.	3
1	PLATE 35x102x710	Fe410WB IS:2062-92	19.9	SUIT TO ASSLY.	2
2	PLATE 210x140x520	Fe410WB IS:2062-92	70.4	SUIT TO ASSLY.	1

1	REDUCER GEAR BODY ASSLY.	ASSLY	1184.48	1
QTY.	DESCRIPTION OF ASSY.	MATERIAL	NET WEIGHT	ASSY.DRG.No.
ALL DIMENSIONS ARE IN mm				
REF.DRG.No. --				
SCALE	DRAWN	NAME	SIGN	DATE
NTS	DESIGNED	17/11/19		
APPROVED				
TITLE			DRG.No.	REV.
REDUCER COVER			085003/B-1101	0

THE REST