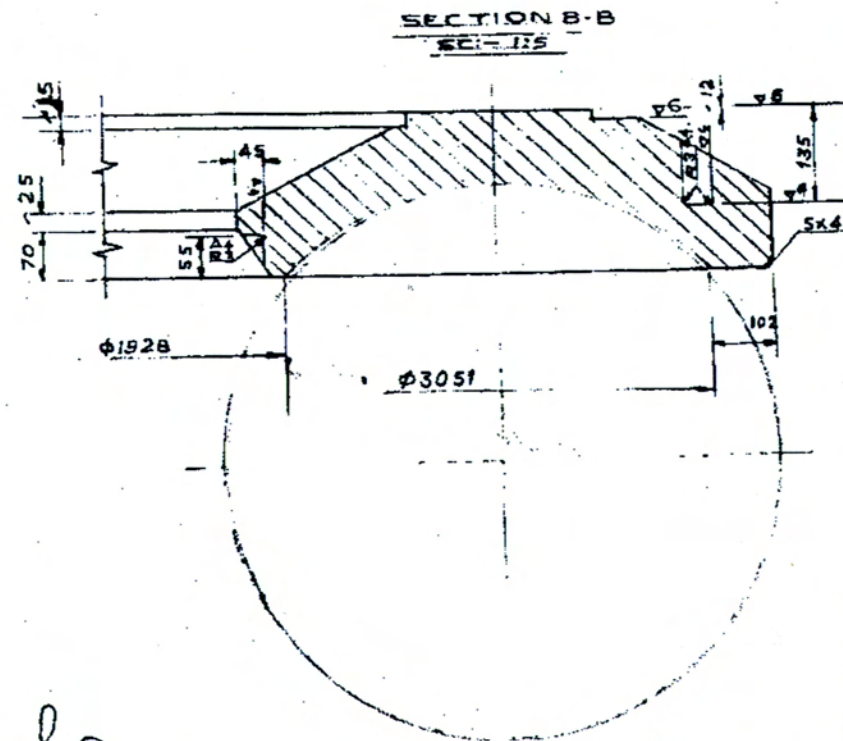
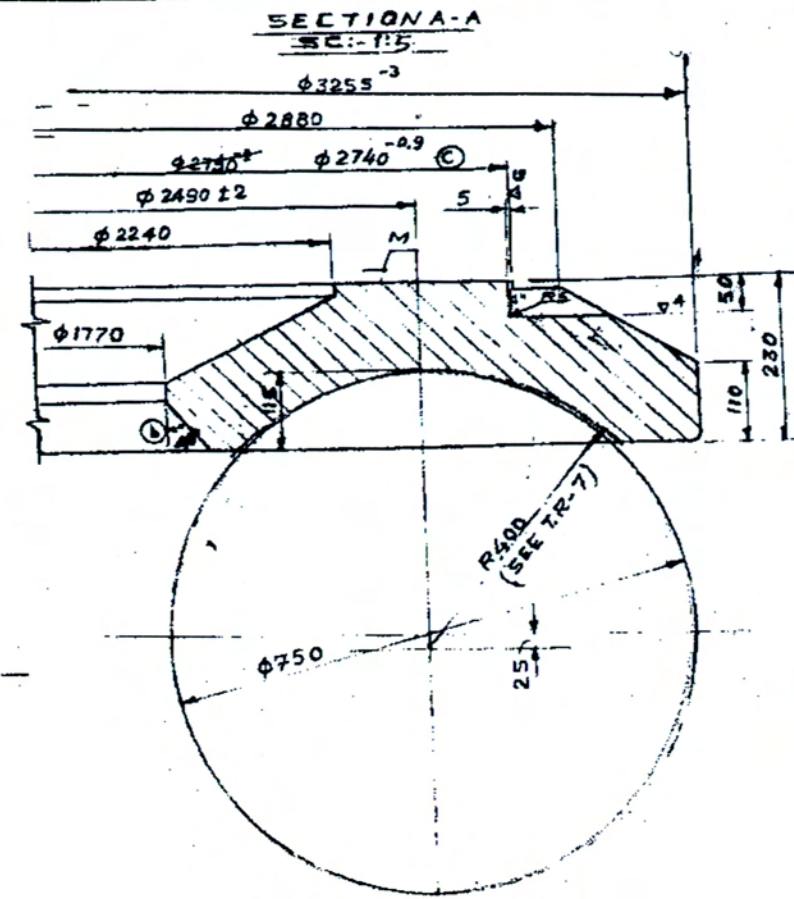
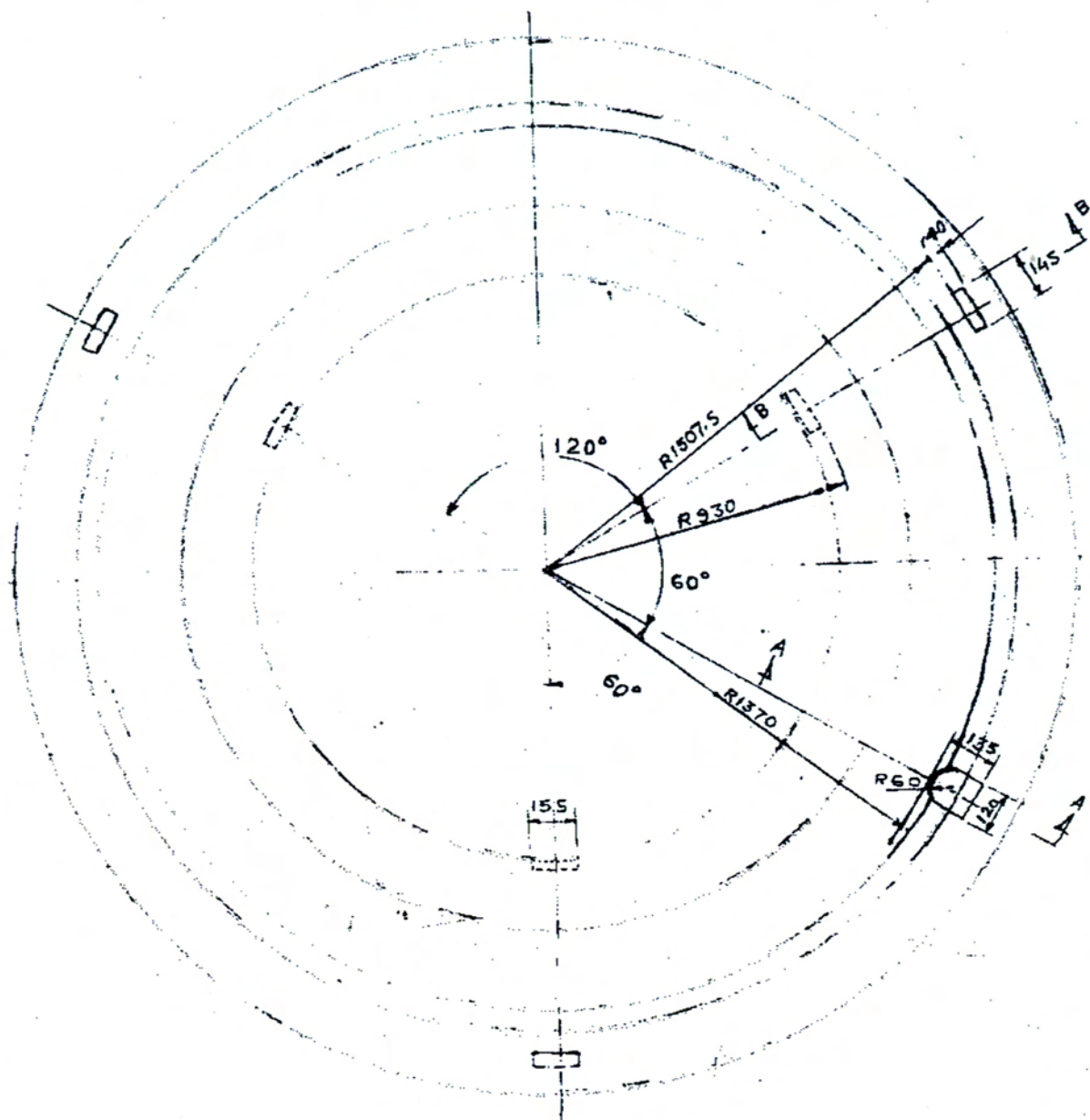


167.001.00.005A



TECHNICAL REQUERMENT

01. CASTING RADII WHEREVER NOT MENTIONED SHOULD BE SUITABLY TAKEN.
02. CASTING SHOULD BE FREE FROM ITS NORMAL CASTING DEFECTS LIKE SLAG INCLUSIONS, BLOW HOLES, CRACKS & CAVITIES.
03. CASTING SHOULD BE STRESS RELIEVED.
04. CASTING SHOULD BE TESTED ULTRASONICAL LY TO QUALITY LEVEL 3 OF ASTM 609-70.
05. FREE TOLERANCES SHOULD BE TAKEN AS PER MEDIUM CLASS OF IS:-2102-69.
06. NON PERPENDICULARITY OF SURFACE 'M' W.R.T. AXIS OF φ2750 SHOULD NOT EXCEED 1MM.
07. NON PARALLELITY OF SURFACE R 400 W.R.T. SURFACE 'M' SHOULD NOT EXCEED 1 MM.
08. SURFACE R-400 SPHERE TO BE SURFACE HARDENED TO HB ≥ 300 TO DEPTH 1.5-2.0 MM.
09. SHARP EDGES SHOULD BE ROUNDED OFF.

NOTES:-

01. DRAWN AS PER THE MEASUREMENT OF THE SAMPLE AT SITE.
02. MATERIAL OF THE ITEM IS GIVEN AS PER AGREEMENT WITH THE INDENTOR.
03. MATERIAL COMPOSITION OF 70 H₂ GMM (POLISH MATERIAL) GIVEN BY SHOP VIDE THEIR LATTER NO. S/CPP/04/838 DATED:-29/30-3-84.
C:-0.6-0.8%, MN:-0.8-1.0%, Si:-0.4-0.6%, P (max):-0.045%, Cr:-1.6-1.8%, Mo:-0.3-0.4%, Ni:-0.6-0.8%, S (max):-0.045%
04. REF DRG. NO. :- POLAND DRG. NO. :-2 -M-31-014
BSL ARCH NO. :-CPP-PS/270869

RE TRACED BY : VINOD PRASAD - *[Signature]*
 CHECKED BY : H R ANSARI *[Signature]* 12-6-03
 CHECKED FROM DEFACED TRACING

- (b) DIMENSION ADDED Sd/- 19.09.87
- (c) DIMENSIONS REVISED BASED ON THE DIMENSION OF FITTING PART (DRG. No. 1-M33-2339) Sd/- J. Singh. 27.11.92.

AGREED TO
 Sd/
 G. P. SINGH
 SUPDT
 APPROVED FOR M

POS	UPPER GRINDING RING	1	6860	SEE NOTE 3	1:10	167.001.00.005A
	DESCRIPTION	QTY	UNIT WT KG	MAT	G. ASSLY DRG. NO.	SC DRG. NO.
BOKARO STEEL PLANT						
CAPTIVE POWER PLANT						
UNIT BALL MILL (Drg.No.167/001(n))						
DESCRIPTION OF DRAWING DETAILS OF BOWL MILL						
REVISION	DRAWN	NASEEM	30	Sd/-	A1	Mar-84
T.R. 4 REVISED	CHECKED	RAKESH		Sd/-	JOB NO.	5461
Sd/-J.SINGH 24.05.85	SUBMIT	J. SINGH		Sd/-		
G.P.SINGH SUPDT TPP	RECOMND	D.M. ROY		Sd/-		
	APPROVED	P.C.SING				
						167.001.00.005 C