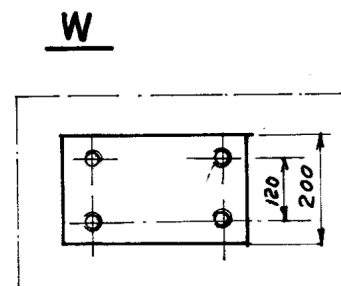
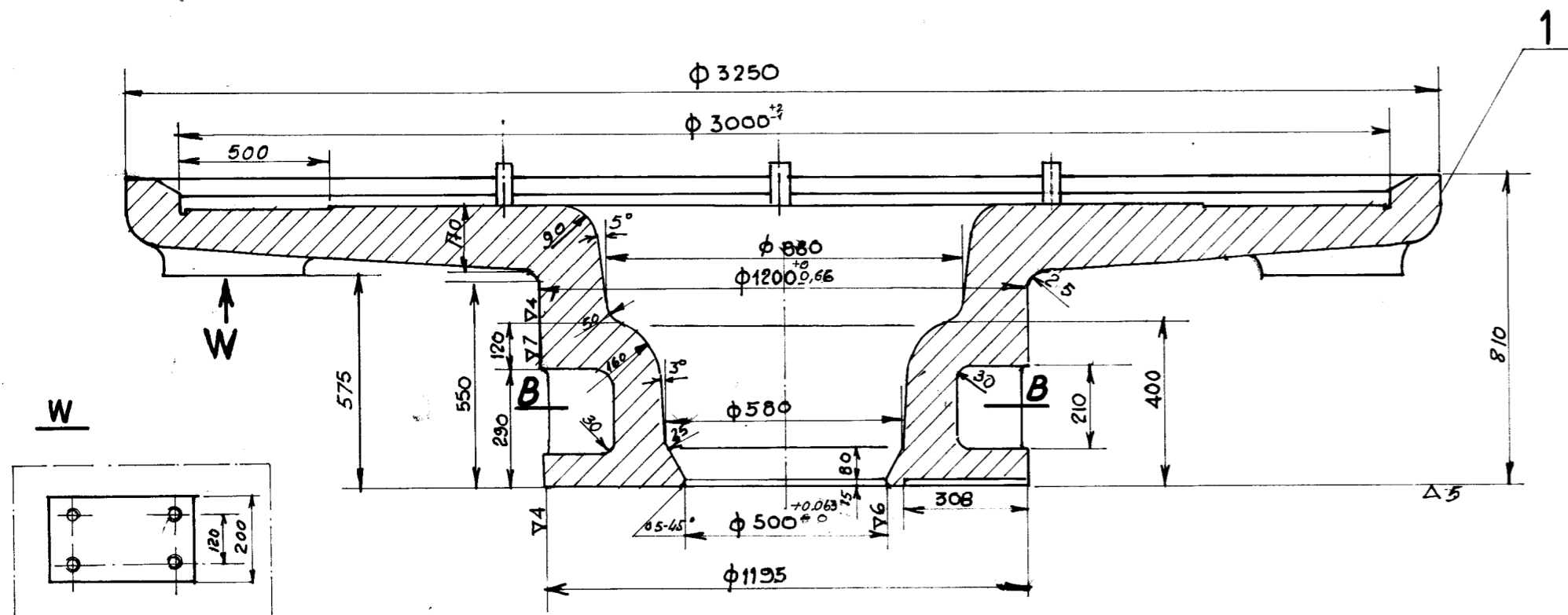
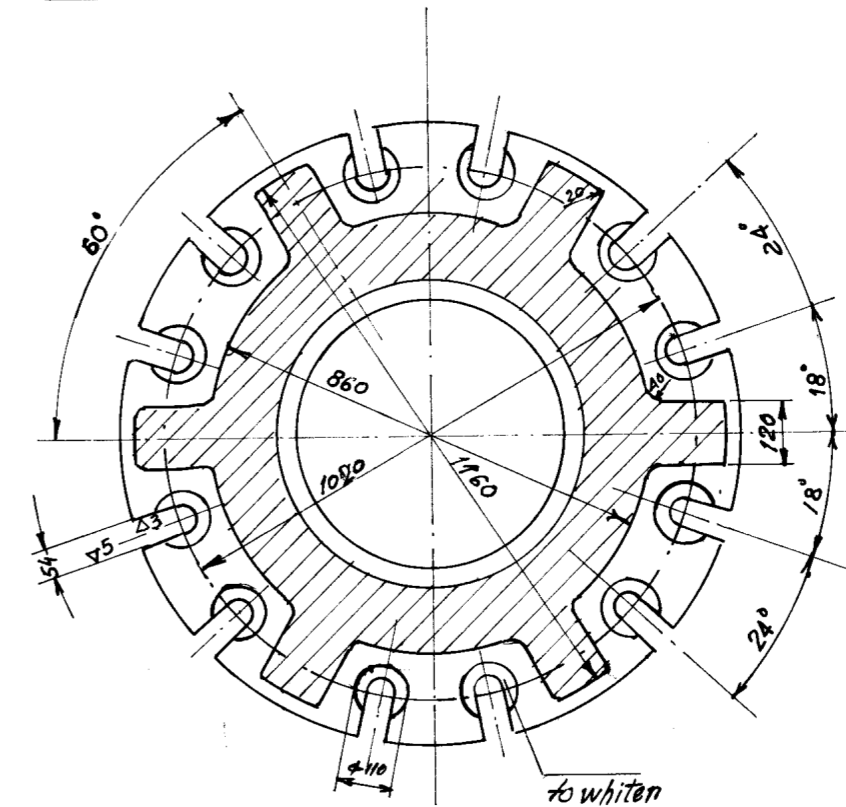


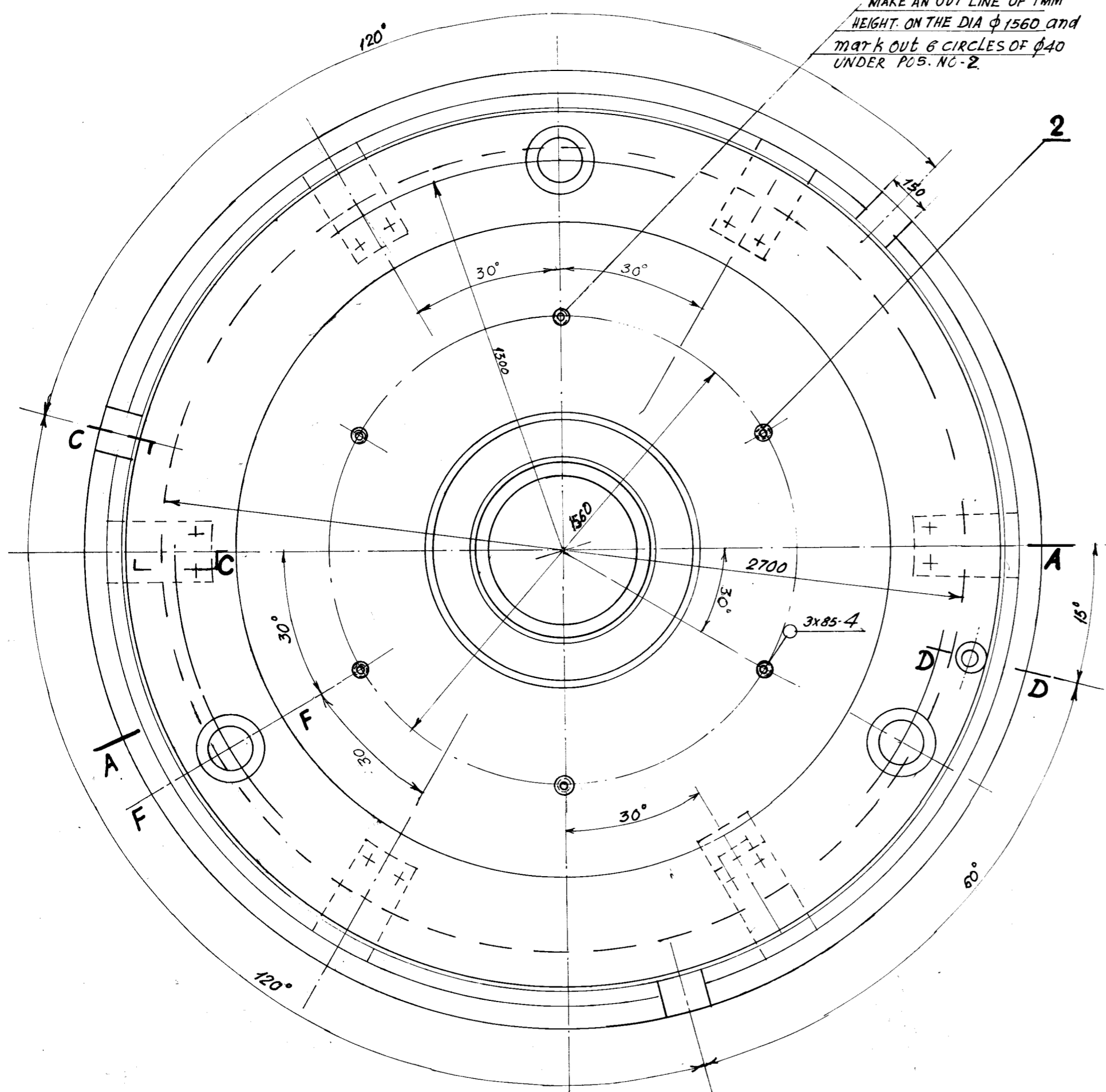
A-A



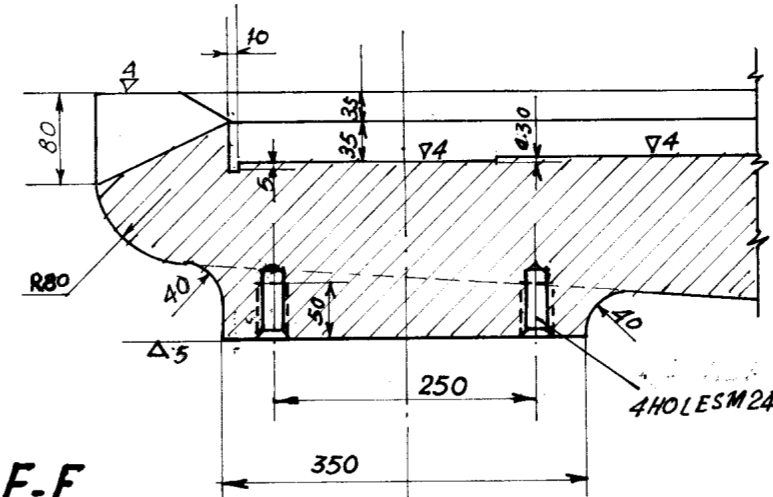
B-B



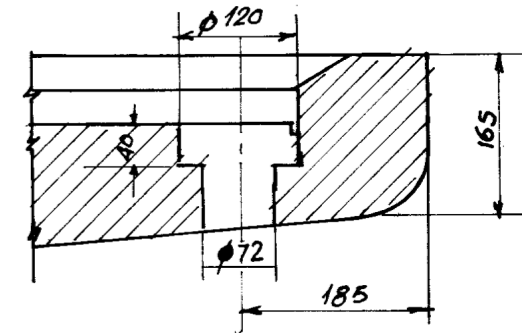
MAKE AN OUT LINE OF 1MM HEIGHT ON THE DIA $\phi 1560$ and mark out 6 CIRCLES OF $\phi 40$ UNDER POS. NO-2



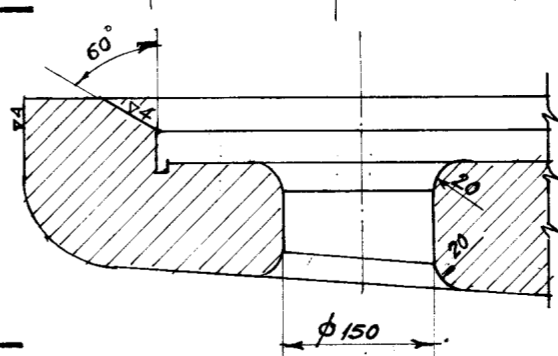
C-C
1:5



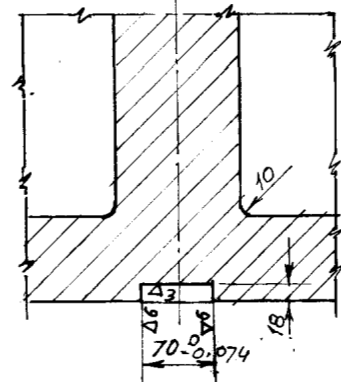
D-D
1:5



F-F
1:5



E-E
1:5



THE NEAREST EQUIVALENT MATERIAL:
CARBON STEEL CASTING GR 1 IS: 2707-1989
CHEMICAL COMPOSITION: C=0.42, Si=0.60, Mn=1.00, S=0.040, P=0.040
MECHANICAL PROPERTY: TENSILE STRENGTH M_b MIN 620, YIELD STRESS M_y MIN 320, ELONGATION % MIN 12

COMPOSITION OF MATERIAL OF YOKE
C=0.45, Mn=0.67, P=0.010
S=0.016, Si=0.36, Ni=0.12

PN	QTY	DESCRIPTION	UNIT	TOTAL	MATERIAL	REMARKS		
PN-63	3	ELECTRIC WELD SW	0.76	0.113	ER-746			
M-674233					E-45B			
PN-67	2	BAR $\phi 40 \times 130$	6	1	ST-3			
M-84020								
PN-71	1	YOKE	1	10,000	250 II			
M-83152								
STANDARD NOS.	CPP. DRG. NO.	POS. NO.	DESCRIPTION	QTY	UNIT	TOTAL WT. IN KGS.	MATERIAL	REMARKS

POS. NO.	DESCRIPTION	QTY	UNIT	MATERL.	GADRG. NO.	SC	DRG. NO.
-	YOKE	-	10,305	-	-	1:10	167.001(N)/BM-035

COP		BOKARO STEEL PLANT.	
SHOP		CAPTIVE POWER PLANT.	
UNIT		BOWL MILL	
DESCRIPTION OF DRAWING		DETAILS OF YOKE.	
REVISIONS	TRACED	KKGHOSH	DATE MAR-90
	CHECKED	Z.N.ANSARI	SCALE 1
	RECOMND.		167.001(N)/BM
	SUBMTD.		-035
	APPROVED		

THIS DRG IS TRACED FROM POLISH DRG NO.1-M33-318 d.
CPP ARCH-NO CPP-PS 270878.